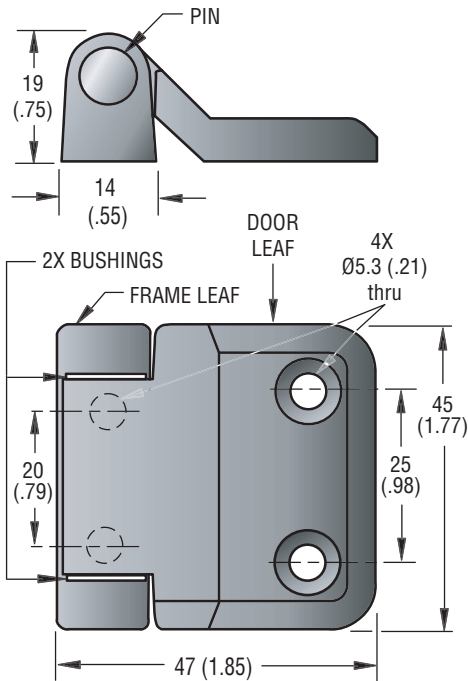


Southco® EH Hinge

Free Operating, Fixed Installation, Offset

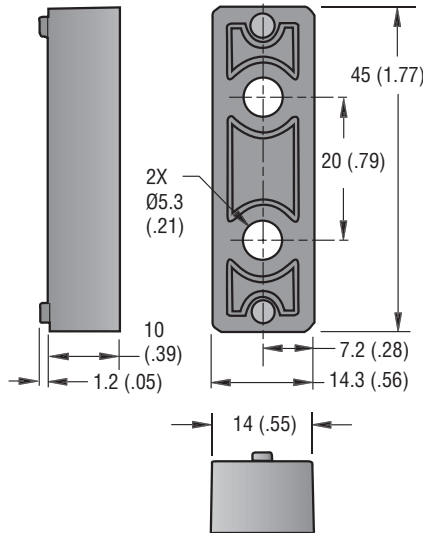
southco®

- Allows 180 degree opening
- Offset pivot maximizes cabinet access
- Ideal for closely spaced enclosures



Optional Spacer

For offset mount applications.



FINISH	PART NUMBER
Chrome	EH-6C-5V4-38
Black	EH-6C-5V4-50

FINISH	SPACER PART NUMBER
Chrome	EH-6C-B-38
Black	EH-6C-B-50

Material & Finish

DOOR and FRAME LEAF and SPACER: Die cast zinc, chrome plated or black powder coated
 PIN: Stainless steel
 BUSHINGS: Acetal, natural

Product Strength Guidelines

(To assist in your product selection; samples are available for your evaluation.)

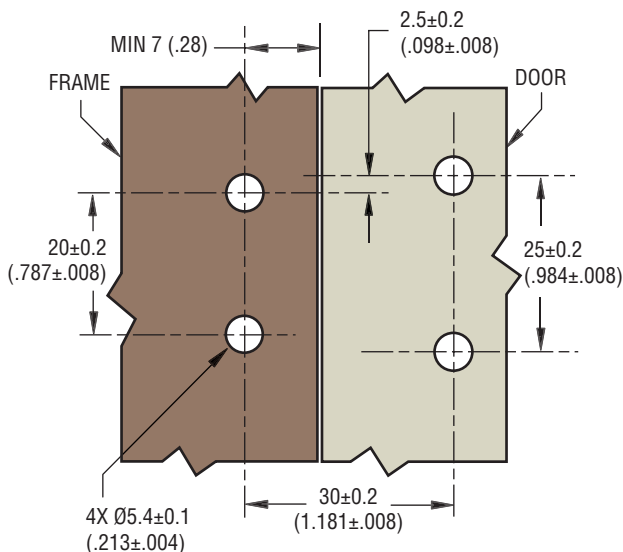
Radial Load

Maximum Static Load: 2670 N (600 lbf)

Axial Load

Maximum Static Load: 2670 N (600 lbf)

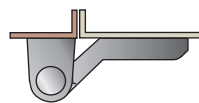
Panel Preparation



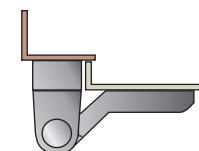
Installation

1. Install using M5 or #10 flat head screws (not supplied)
2. Mount Frame Leaf to Frame
3. Mount Door Leaf
4. Insert pin through Frame and Door Leaf
5. Press in pin to secure

Standard Flush Mount



Offset Mount with Spacer



millimeter (inch)
 millimeter (inch)

Dimensions without tolerances are for reference only.

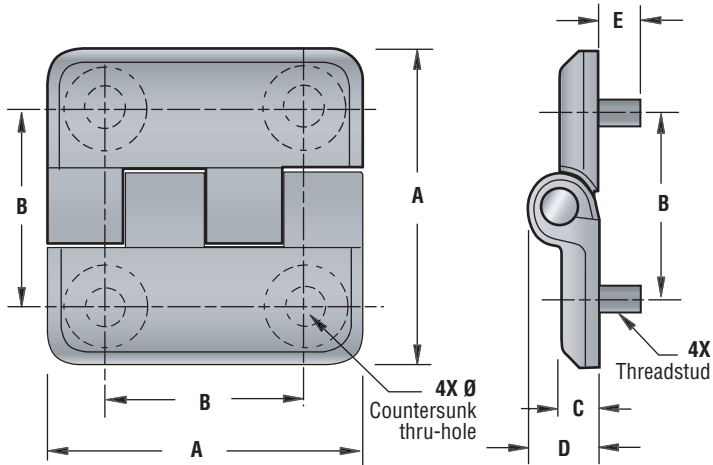
Southco® EH Hinge

Free Operating, Fixed Installation

southco®

40 & 50 mm Sizes

- Robust surface-mount design
- 2 sizes suit a range of applications
- Countersunk mounting holes permit front mounting
- Multiple material and finish options



Material and Finish

LEAF: Die cast zinc, chrome plated or black powder coated or nylon, black
 PIN: Stainless steel
 THREAD STUDS: Steel, zinc plated

Product Strength Guidelines

(To assist in your product selection; samples are available for your evaluation.)

40 mm Die Cast Zinc

Radial Load

Maximum static load: 1330 N (300 lbf)

Axial Load

Maximum static load: 2220 N (500 lbf)

50 mm Die Cast Zinc

Radial Load

Maximum static load: 2140 N (480 lbf)

Axial Load

Maximum static load: 3560 N (800 lbf)

50 mm Nylon

Radial Load

Maximum static load: 890 N (200 lbf)

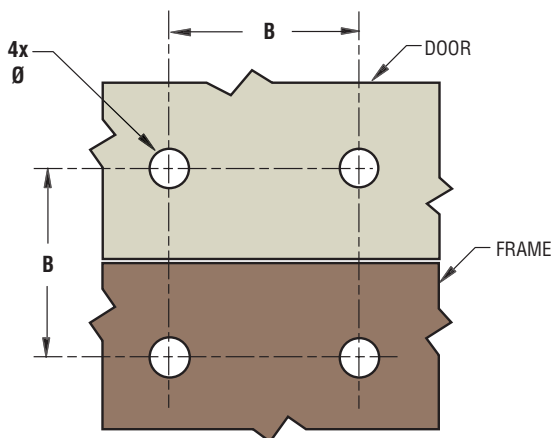
Axial Load

Maximum static load: 1230 N (276 lbf)

SIZE A	Threadstud PART NUMBERS			Panel Preparation		C	D	E
	Chrome Die Cast Zinc	Black Die Cast Zinc	Black Nylon	B \pm 0.2 (\pm .008)	ϕ \pm 0.1 (\pm .004)			
40 (1.57)	EH-5A-4G4-38	EH-5A-4G4-50	—	25 (.984)	5.4 (.213)	5 (.20)	9 (.35)	M5 8.5 (.33)
50 (1.97)	EH-6A-5G5-38	EH-6A-5G5-50	EH-6A-5G5-20	30 (1.181)	6.4 (.252)	6 (.24)	11 (.43)	M6 8 (.31)

SIZE A	Countersunk thru-hole PART NUMBERS			Panel Preparation		C	D
	Chrome Die Cast Zinc	Black Die Cast Zinc	Black Nylon	B \pm 0.2 (\pm .008)	ϕ \pm 0.1 (\pm .004)		
40 (1.57)	EH-5A-4V4-38	EH-5A-4V4-50	—	25 (.984)	5.4 (.213)	5 (.20)	9 (.35)
50 (1.97)	EH-6A-5V5-38	EH-6A-5V5-50	EH-6A-5V5-20	30 (1.181)	6.4 (.252)	6 (.24)	11 (.43)

Panel Preparation



Installation

Install Threadstud:

- 40 size using M5 Nuts (not supplied)
- 50 size using M6 Nuts (not supplied)

Install Countersunk:

- 40 size using M5 or #10 flat head screws (not supplied)
- 50 size using M6 or 1/4 -20 flat head screws (not supplied)

millimeter (inch)
 millimeter (inch)

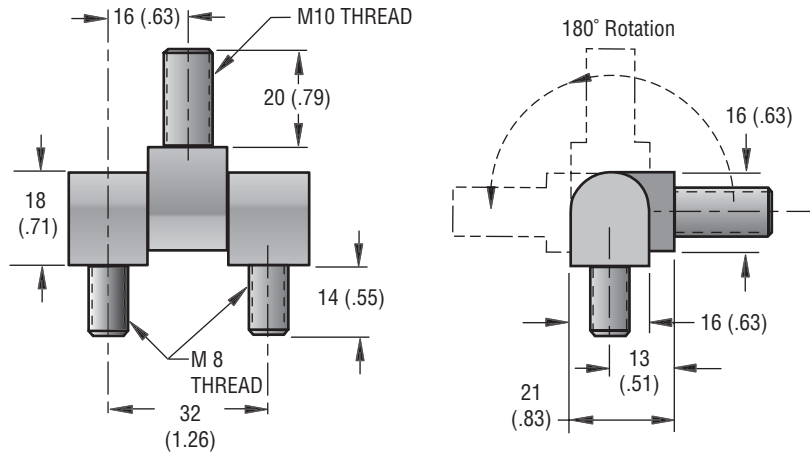
Dimensions without tolerances are for reference only.

Southco® EH Hinge

Free Operating, Fixed Installation, In-Line

southco®

- Robust design withstands the most severe applications
- Concealed mounting hardware for added security
- Simple 3 hole installation



Material and Finish

HINGE LEAVES: Brass, chrome plated
PIN: Steel, zinc plate, bright chromate

Product Strength Guidelines

(To assist in your product selection; samples are available for your evaluation.)

Radial Load

Maximum Working Load: 5000N (1120 lbf.)

Axial Load

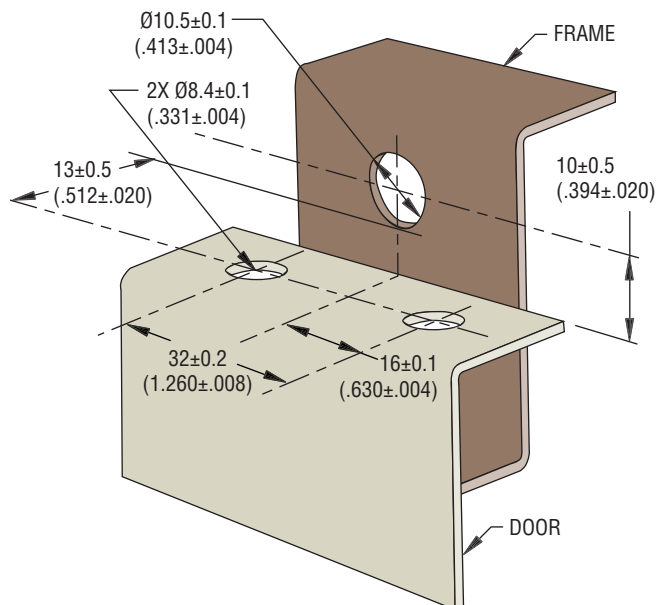
Maximum Working Load: 5000N (1120 lbf.)

PART NUMBER
EH-8R-5G-38

Panel Preparation

Installation

Install using 2- M8 nuts and 1-M10 nut



millimeter (inch)
millimeter
(inch)

Dimensions without tolerances are for reference only.