

Southco® Draw Latches

Soft Latch Series, Small Size

- **Non-corrosive materials**
- **Cushions impact, absorbs vibration, tolerates misalignment**
- **Over-center latching**
- **All hardware is concealed when latched**
- **Choice of keeper styles**



Material and Finish

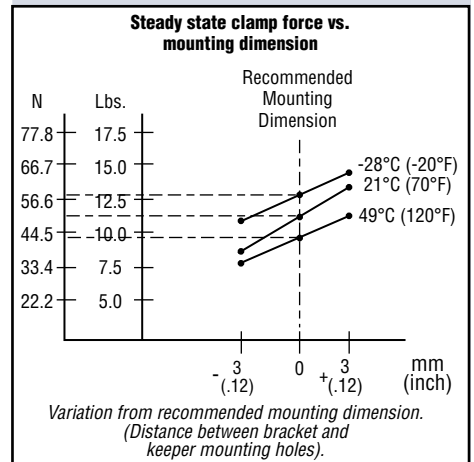
Latch Sub-Assembly consists of
LATCH BODY: Thermoplastic Elastomer, matte black.
LINK and BUSHINGS: Glass reinforced nylon, black.
RIVET: 430 Stainless steel passivated.
KEEPER and BRACKET: 304 Stainless steel, passivated.
PINS: 300 Stainless steel, passivated.

Keeper Style	ASSEMBLY PART NUMBER
Concealed	C7-10 •
Reverse Keeper	C7-11 •
Right Angle Keeper	C7-12 •

Product Strength Guidelines

(To assist in your product selection; samples are available for your evaluation.)

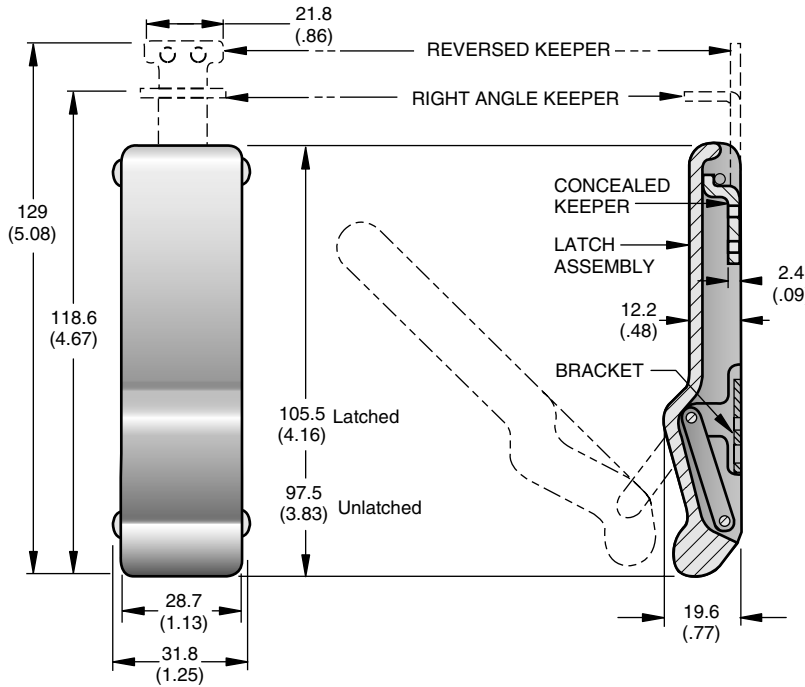
Flammability Rating (Link and Bushings): UL 94 - HB



Variation from recommended mounting dimension. (Distance between bracket and keeper mounting holes).

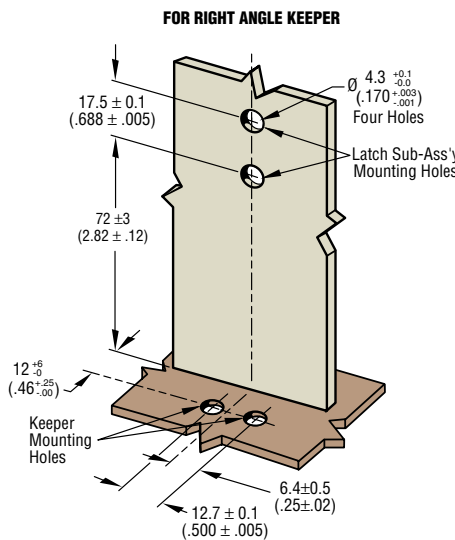
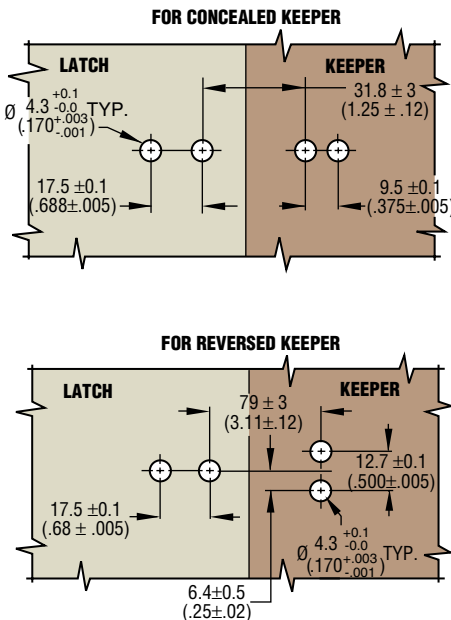
millimeter (inch)
 millimeter
 (inch)

Dimensions without tolerances are for reference only.



Panel Preparation

Mount keeper and latch using 4 mm or 5/32" diameter rivets, M4 or No. 8 size hardware.

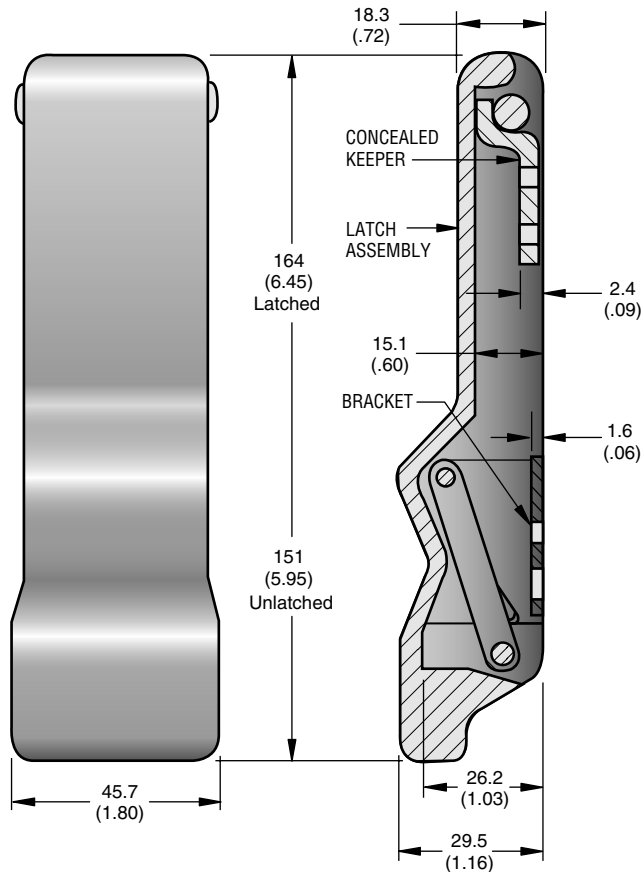
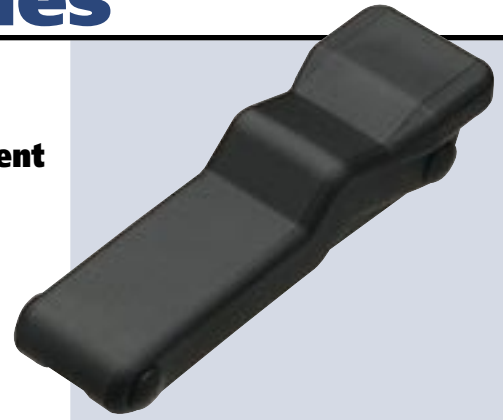


Draw Latches
 Rubber/Elastomer

Southco® Draw Latches

Soft Latch Series, Large Size

- Non-corrosive materials
- Cushions impact, absorbs vibration, tolerates misalignment
- Over-center latching
- All hardware is concealed when latched

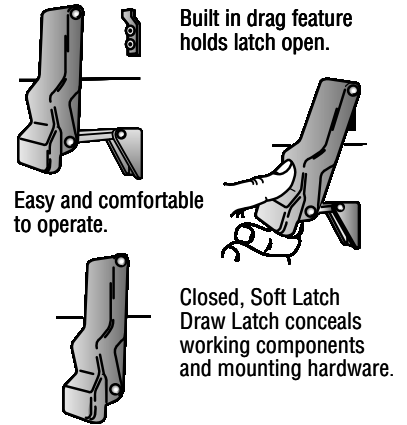
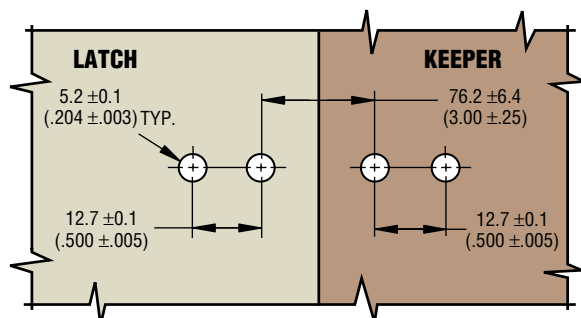


ASSEMBLY PART NUMBER

C7-20 •

Panel Preparation

Mount latch using 5 mm or 3/16" rivets, M5 or No. 10 size hardware.



Material and Finish

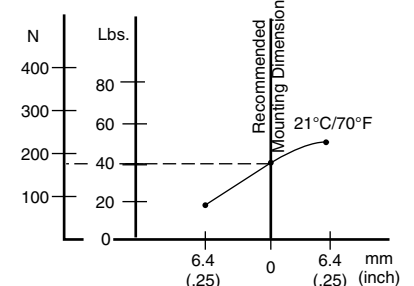
Latch Sub Assembly consists of :
 LATCH BODY: Thermoplastic elastomer, matte black.
 LINK and BUSHINGS: Glass reinforced nylon, black.
 RIVET: 430 Stainless steel passivated.
 KEEPER and BRACKET: 304 Stainless steel, passivated.
 PINS: 300 Stainless steel, passivated.

Product Strength Guidelines

(To assist in your product selection; samples are available for your evaluation.)

Flammability Rating: UL94 - HB

Steady state clamp force vs. mounting dimension



Variation from recommended mounting dimension. (Distance between bracket and keeper mounting holes).

millimeter (inch)
 millimeter (inch)

Dimensions without tolerances are for reference only.

Draw Latches
 Rubber/Elastomer